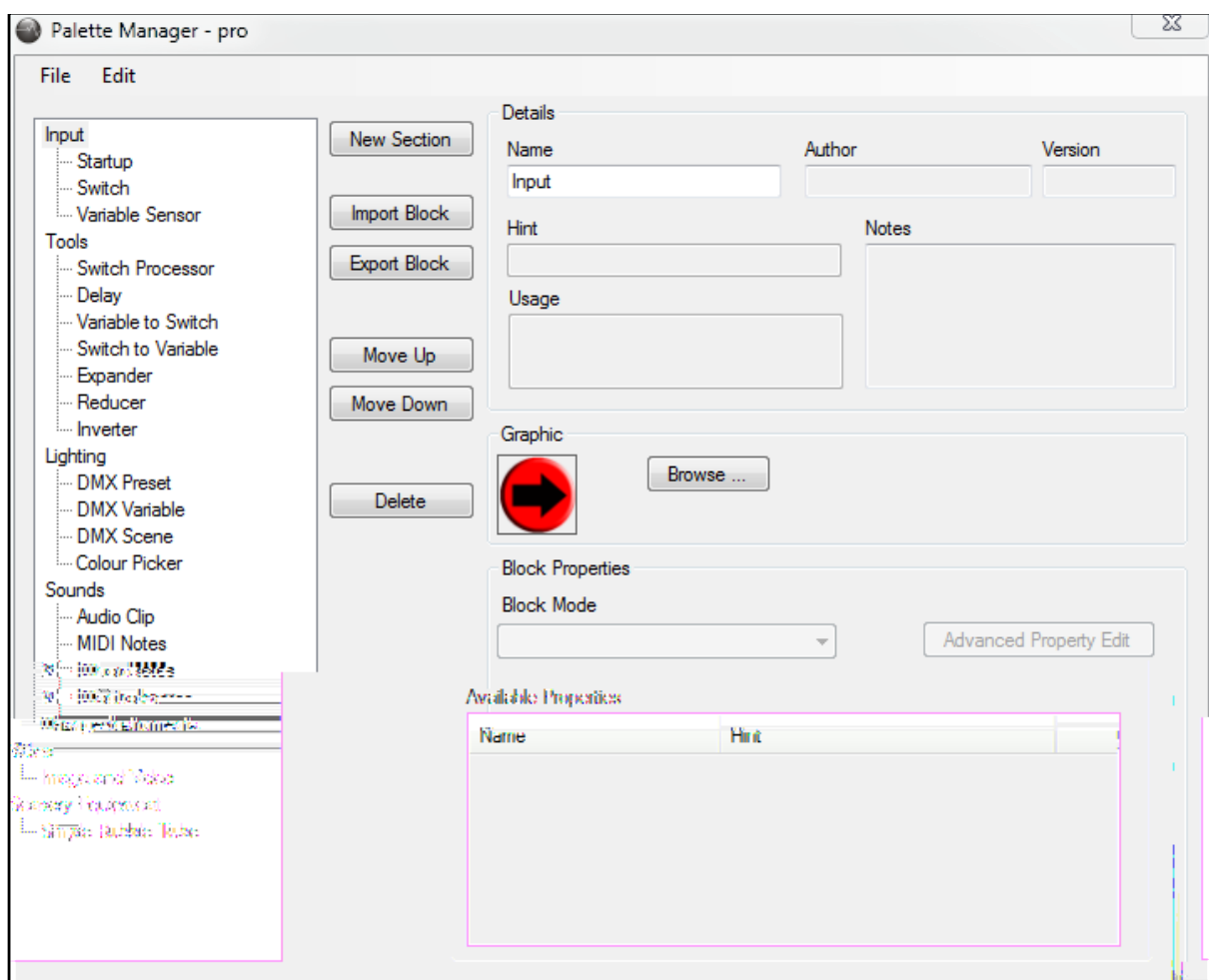


The Palette Manager is an element of Ensemble Designer that allows you to change the palette that you are using. From here you can import new blocks, change block names, or add new sections.

Ben Johnson

If you would like to change your palette in any way, for example to add a block you've downloaded from our support website, we've made it simple. Included is an application that helps you manage your palette easily.

In Designer, select Tools > Palette Manager. You will then see a screen similar to the one below, although your palette may be different.



Importing a block

To import a block that you have downloaded, click on the palette section that you would like to place the block in, for example 'Input' or 'Tools'. Now click on the 'Import Block' button and find the block file on your computer. (If you downloaded the block as a ZIP file, you will need to extract it first.)

**Please see the Devices Monitor guide for details of how to create blocks based on your wireless (Connect or Dice), or sensory

When you find the file you want to import, click 'Open'. The block graphic will also be imported if it is found in the same folder. (You may be asked if you want to import a plugin file as well, generally you will want to press yes).

Once you close this window and return to the map the new block will appear on the palette. Remember to save your palette before you close, otherwise you will have to do it all again!

Changing the name of a block

To change the name of a block, simply click on it. This will select the block and show its details on the right hand side. At the top you will see that there is a text field for its name, all you have to do is change this value to whatever you would like to call the block. When you save and close Palette Manager the new name for the block will be shown.

Adding a new section

If you want to add a new section, for example to add a 'Wireless' section that contains the Connect and Dice blocks, all you need to do is click on the 'New Section' button. This will create a new section with a default grey icon beneath the currently selected section. Enter your own desired name for this section and move it in to place with the 'Move Up' and 'Move Down' buttons.

Changing the block icon

If you want to change the icon that Designer uses for a particular block, for example to a picture of your individual switch, just select the block in Palette Manager and press the 'Browse' button next to the graphic. This will open a dialog, from where you can select the picture you wish to use instead. Save the palette and return to the map to see your icons in use.