

## Setting up TouchOSC

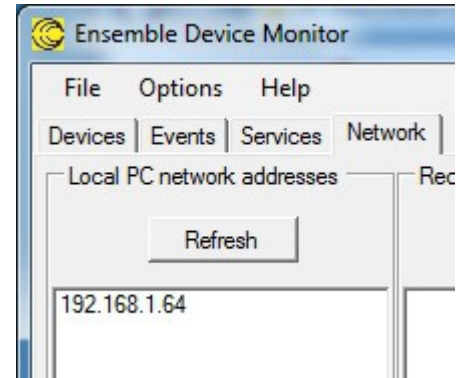
To configure TouchOSC you will need to set the ports and IP address to match the default settings for the Ensemble TouchOSC blocks.

You can find the IP address of your PC by opening Ensemble Device Monitor and clicking on the Network tab. You should see the IP address of your machine in the list.

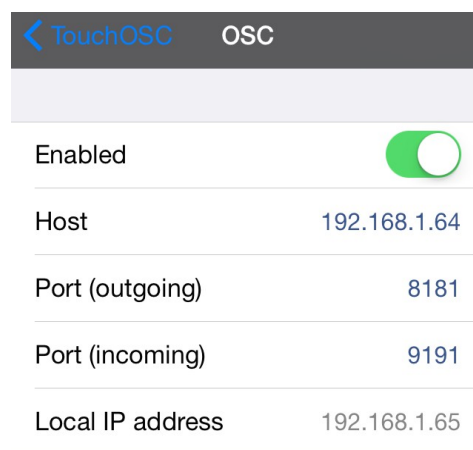
Enter this IP address in the **Host** setting in TouchOSC.

The default UDP ports are:

Port (outgoing) 8181  
Port (incoming) 9191



The OSC settings window on your device should look similar to the following:



## TouchOSC Editor

The Ensemble blocks are designed to work with the default settings assigned to controls in TouchOSC Editor. If you change the name of a control when designing a layout then the receiving block in Ensemble will no longer work.

The Value Range of 0 – 1 is scaled to 0 – 100% in Ensemble.

Faders and Rotary controls can be either vertical or horizontal – it does not affect the names assigned.

## 'Push Button' block



Receives a TouchOSC Push Button message.

A **Push Button** block has no inputs. It has a single trigger output.

The block has a single setting.

### Settings

'Push Button'	The number of the button used in TouchOSC.
1 – 10	When you add push buttons in TouchOSC designer it will give them a default name of /1/pushx where x is a number from 1 to 10. This block will trigger it's output when the message is received.

## 'Toggle Button' block



Receives a TouchOSC Toggle Button message.

A **Toggle Button** block has no inputs. It has a single trigger output.

The block has a single setting.

### Settings

'Toggle Button'	The number of the button used in TouchOSC.
1 – 10	When you add toggle buttons in TouchOSC designer it will give them a default name of /1/togglex where x is a number from 1 to 10. This block will trigger it's output when the message is received.

## 'Slider' block



Receives a TouchOSC Fader message.

A **Slider** block has no inputs. It has a single variable output.

The block has a single setting.

### Settings

'Fader'	The number of the fader used in TouchOSC.
1 – 10	When you add a vertical or horizontal fader in TouchOSC designer it will give it a default name of /1/faderx where x is a number from 1 to 10. The output of this block will vary depending on the value received from the defined fader. It is scaled for the full range to be 0 to 100%.

## 'Rotary' block



Receives a TouchOSC Rotary message.

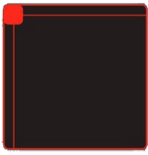
A **Rotary** block has no inputs. It has a single variable output.

The block has a single setting.

### Settings

'Fader'	The number of the rotary control used in TouchOSC.
1 – 10	When you add a vertical or horizontal rotary control in TouchOSC designer it will give it a default name of /1/rotaryx where x is a number from 1 to 10. The output of this block will vary depending on the value received from the defined rotary control. It is scaled for the full range to be 0 to 100%.

## 'XY Pad' block



Receives a TouchOSC XY Pad message.

A **XY Pad** block has no inputs. It has two variable outputs.

The block has a single setting.

### Settings

'XY Pad'	The number of the XY Pad used in TouchOSC.
1 – 10	When you add a XY Pad in TouchOSC designer it will give it a default name of /1/xyx where x is a number from 1 to 10. The outputs of this block will vary depending on the value received from the defined XY Pad. It is scaled for the full range to be 0 to 100%.